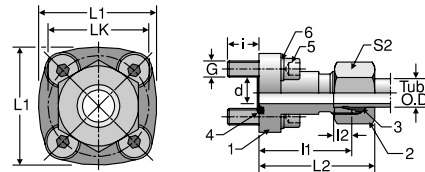


BFG

DIN Flange / Metric Flareless

Tube connection according to DIN 2353



TUBE FITTING PART #	WORKING PRESSURE (bar)	TUBE O.D. (mm)	d (mm)	G	i (mm)	L1 (mm)	L2 (mm)	L1 (mm)	L2 (mm)	LK (mm)	S2 (mm)	STANDARD MATERIAL FROM STOCK		STANDARD EO-2 FROM STOCK	
												A3C	71	A3C	71
BFG15L/LK40A3C	65	15	12	M 6	12.5	35	7	42	43	40	27	•		•	
BFG18L/LK40A3C	65	18	15	M 6	12.5	35	7.5	42	44	40	32	•		•	
BFG22L/LK40A3C	65	22	19	M 6	12.5	35	7.5	42	44.5	40	36	•		•	
BFG15L/LK35A3C	155	15	12	M 6	12.5	30	7	39	38	35	27	•		•	
BFG10L/LK35A3C	200	10	8	M 6	12.5	30	7	39	39	35	19	•		•	
BFG12L/LK35A3C	200	12	10	M 6	12.5	30	7	39	39	35	22	•		•	

Unassembled BFG Fitting Components

1 Straight Body	2 Nut	3 Progressive Ring	4 O-Ring	5 Cap Screws DIN 912-8.8 (4 pcs.)	6 Spring Washer DIN 127 (4 pcs.)
BFG15L/LK40A3CX	M15LA3CX	DPR15LA3CX	OR26X2.5X	M6X22	A6
BFG15L/LK40A3CX	M18LA3CX	DPR18LA3CX	OR26X2.5X	M6X22	A6
BFG22L/LK40A3CX	M22LA3CX	DPR22LA3CX	OR26X2.5X	M6X22	A6
BFG15L/LK35A3CX	M15LA3CX	DPR15LA3CX	OR20X2.5X	M6X22	A6
BFG10L/LK35A3CX	M10LA3CX	DPR10LA3CX	OR20X2.5X	M6X22	A6
BFG12L/LK35A3CX	M12LA3CX	DPR12LA3CX	OR20X2.5X	M6X22	A6

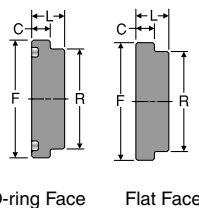
EO-2 Part Number example: BFG15ZL/LK40A3C

Temperature range without pressure reductions for fittings with O-ring sealing of NBR (e.g., buna N series) -35°C up to +100°C, FPM (e.g., fluorocarbon on request) -25°C up to 120°C.

Tightening torques for socket head cap screws see [Table T6](#).

P

Flange Head Plug
Code 61/62 Flange Head Plug



TUBE FITTING PART #		FLANGE SIZE (in.)	C (in.)	F (in.)	L (in.)	R (in.)	STANDARD Dynamic Pressure (x 1,000 PSI)	
O-RING FACE	FLAT FACE						SX	SS
CODE 61 FLANGE HEAD PLUG								
8PQ1	8PQ1N	0.50	0.265	1.188	0.500	0.940	5.0	
12PQ1	12PQ1N	0.75	0.265	1.500	0.560	1.250	5.0	
16PQ1	16PQ1N	1.00	0.315	1.750	0.560	1.500	5.0	
20PQ1	20PQ1N	1.25	0.315	2.000	0.560	1.700	4.0	
24PQ1	24PQ1N	1.50	0.315	2.380	0.620	1.980	3.0	
32PQ1	32PQ1N	2.00	0.375	2.810	0.620	2.450	3.0	
40PQ1	40PQ1N	2.50	0.375	3.312	0.680	2.921	2.5	
48PQ1	48PQ1N	3.00	0.375	4.000	0.750	3.546	2.0	
CODE 62 FLANGE HEAD PLUG								
12PQ2	12PQ2N	0.75	0.345	1.625	0.687	1.250	6.0	
16PQ2	16PQ2N	1.00	0.375	1.875	0.812	1.500	6.0	
20PQ2	20PQ2N	1.25	0.405	2.125	1.000	1.718	6.0	
24PQ2	24PQ2N	1.50	0.495	2.500	1.187	2.000	6.0	
32PQ2	32PQ2N	2.00	0.495	3.125	1.500	2.620	6.0	

Dimensions and pressures for reference only, subject to change.

